

## Mark schemes

**1.**

(a) **(A)** bronchus

*allow bronchi*  
*allow bronchiole*

1

**(B)** trachea

*allow windpipe*

1

**(C)** alveolus

*allow alveoli*  
*ignore air sac*

1

(b) circulatory system

1

(c) **Q**

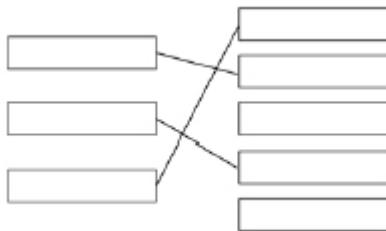
1

(d) guard cell

1

(e) a group of cells with a similar structure / function

1



(f)

**1 mark for each correct line**  
*extra line from a tissue negates the mark for that tissue*

3

**[10]**

**2.**

(a) (i) A = (cell) membrane

1

B = cytoplasm

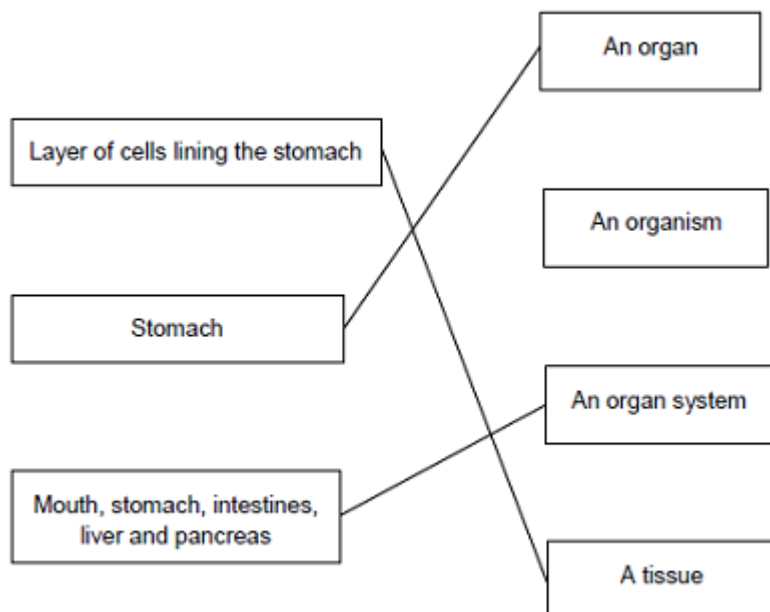
*do **not** accept cytoplasm*

1

(ii) To control the activities of the cell

1

(b)



*extra lines cancel*

3

[6]

3.

(a)

Structure	Organ	Organ system	Tissue
Stomach	✓		
Cells lining the stomach			✓
Mouth, oesophagus, stomach, liver, pancreas, small and large intestine		✓	

all 3 correct = 2 marks

2 correct = 1 mark

1 or 0 correct = 0 marks

2

(b) (i) diffusion

*allow phonetic spelling*

1

(ii) glucose

1

(iii) mitochondria

1

[5]